

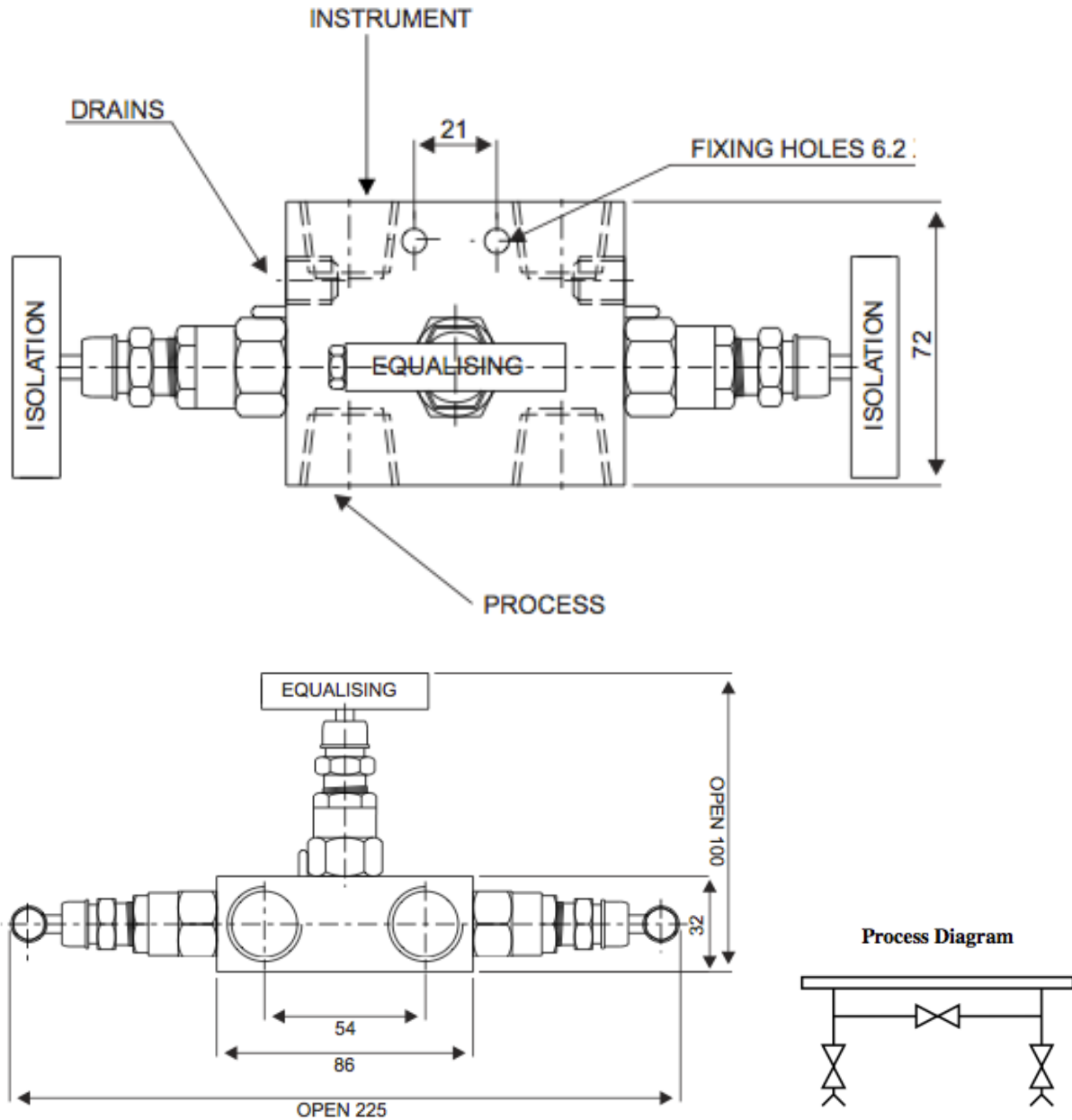


JANTA STEEL HOUSE  
39/45, C.P.Tank Road,  
Mumbai-400004

jantasteel@gmail.com  
sales.jantasteel@gmail.com  
022-66362143

**3-Way Manifold (Pipe to Pipe Type)**

**Model : ISH/MF/801**



Pressure : 6000 Psi

Connections : Process - 1/2" NPT - F  
Instrument - 1/2" NPT - F  
Drain - 1/4" NPT - F

Material : Stainless Steel, Duplex Steel, Nickel Alloys.

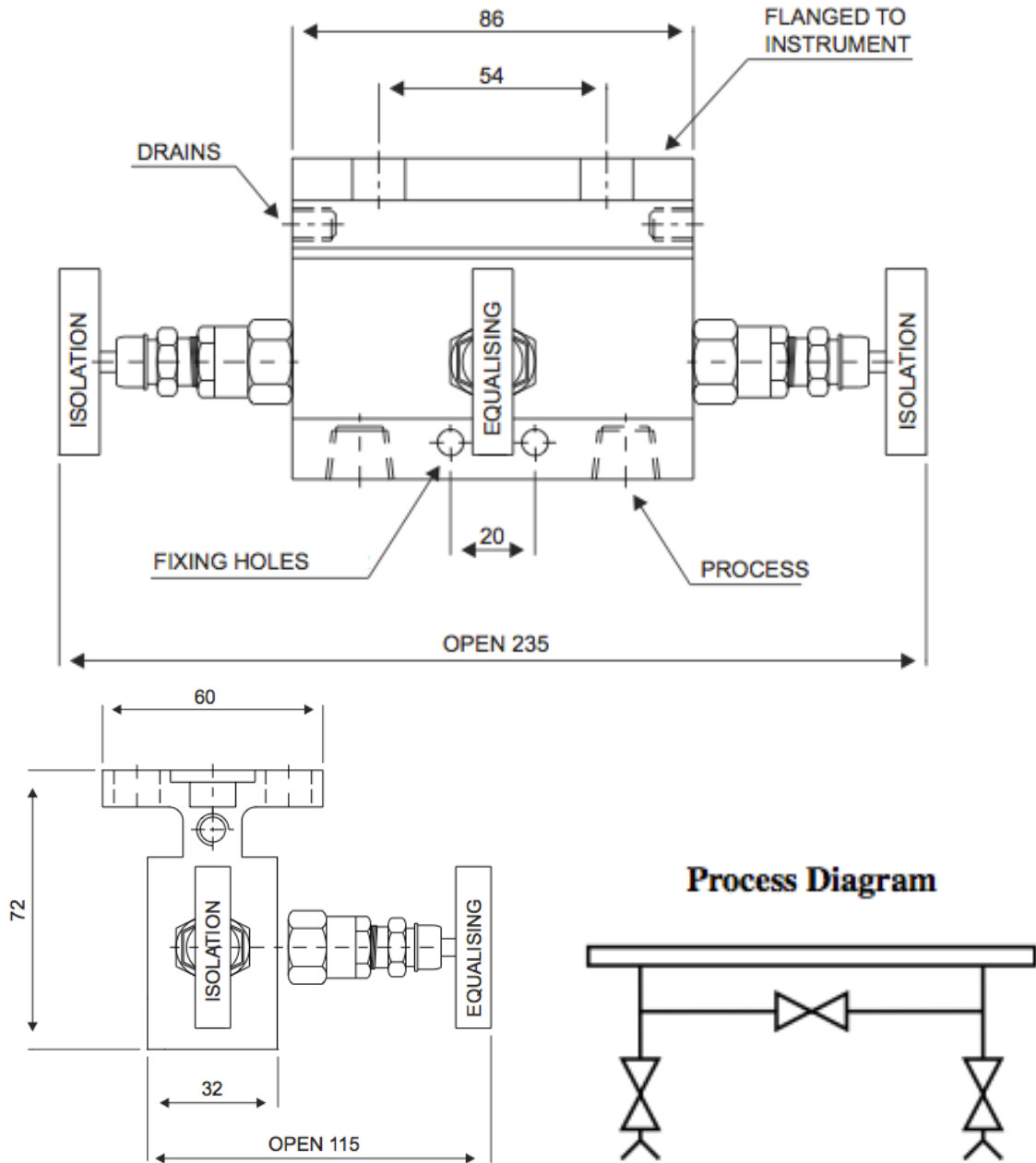


JANTA STEEL HOUSE  
39/45, C.P.Tank Road,  
Mumbai-400004

jantasteel@gmail.com  
sales.jantasteel@gmail.com  
022-66362143

**3-Way Manifold (Pipe to Flange Type)**

**Model : ISH/MF/802**



Pressure : 6000 Psi  
Connections : Process - 1/2" NPT - F  
Instrument - Flange  
Drain - 1/4" NPT - F  
Material : Stainless Steel, Duplex Steel, Nickel Alloys.

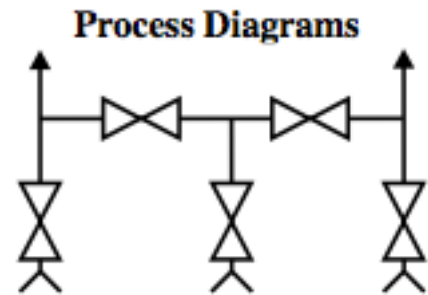
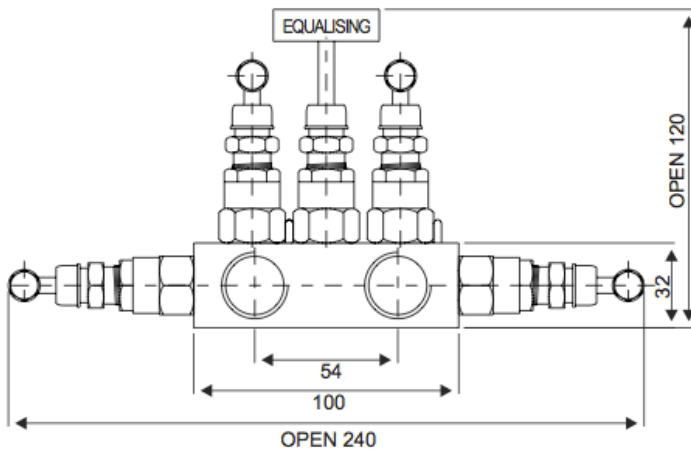
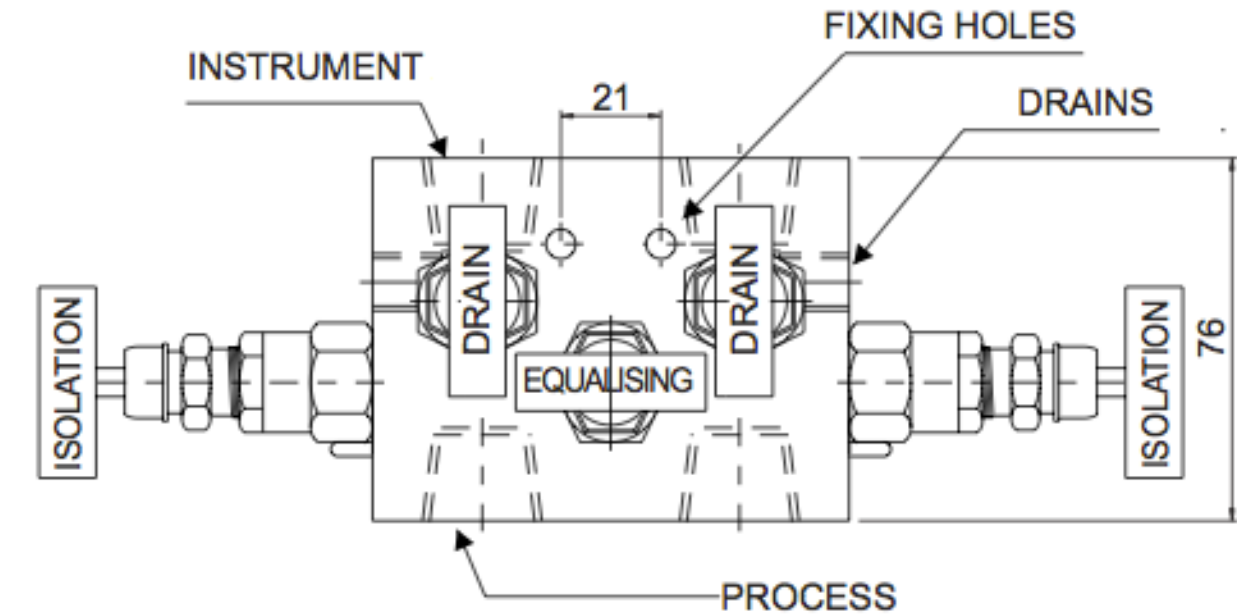


JANTA STEEL HOUSE  
39/45, C.P.Tank Road,  
Mumbai-400004

jantasteel@gmail.com  
sales.jantasteel@gmail.com  
022-66362143

**5-Way Manifold (Pipe To Pipe Type)**

**Model : ISH/MF/803**



Pressure : 6000 Psi

Connections : Process - 1/2" NPT - F  
Instrument - 1/2" NPT - F  
Drain - 1/4" NPT - F

Material : Stainless Steel, Duplex Steel, Nickel Alloys.

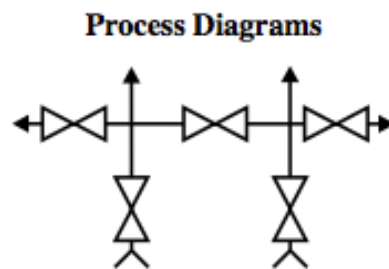
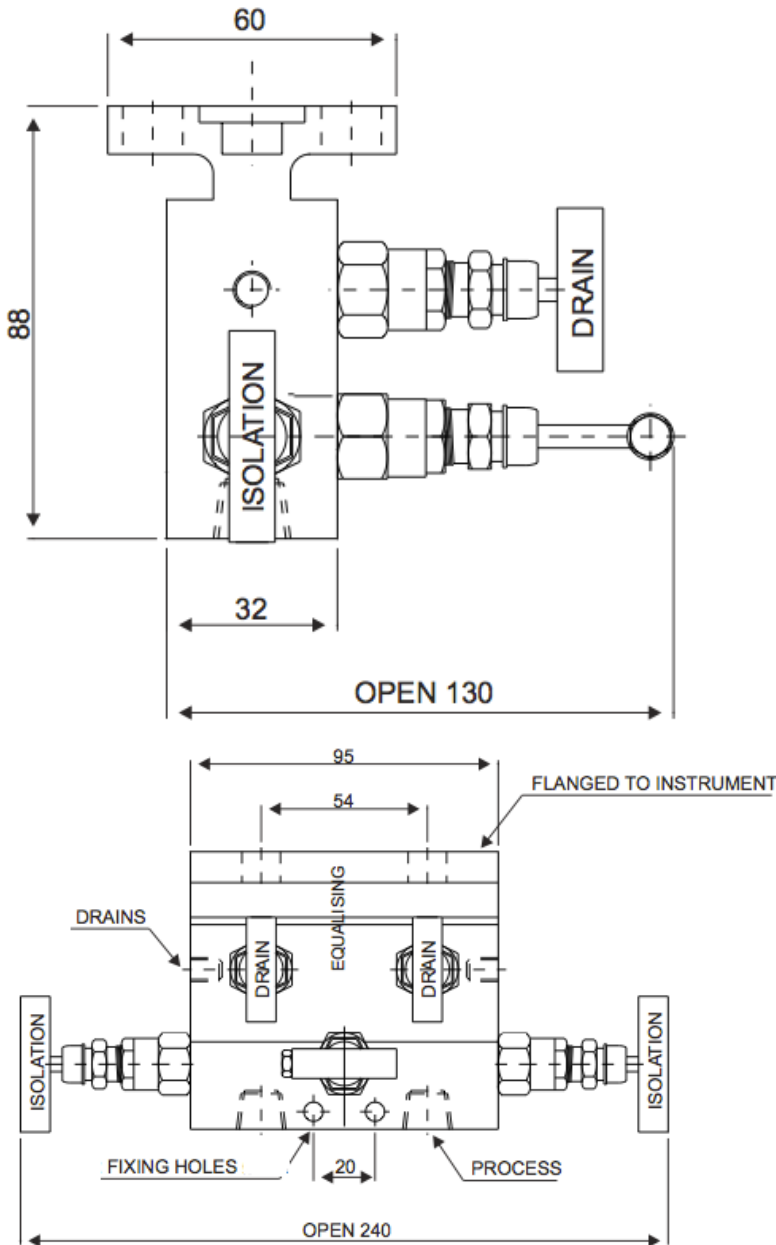


JANTA STEEL HOUSE  
39/45, C.P.Tank Road,  
Mumbai-400004

jantasteel@gmail.com  
sales.jantasteel@gmail.com  
022-66362143

**5-Way Manifold (Pipe To Flange Type)**

**Model : ISH/MF/804**



Pressure : 6000 Psi

Connections : Process - 1/2" NPT - F  
Instrument - Flange  
Drain - 1/4" NPT - F

Material : Stainless Steel, Duplex Steel, Nickel Alloys.